



CACHE VALLEY ELECTRIC



CVE PRECONSTRUCTION

CVE has a fully integrated preconstruction team dedicated to increasing project productivity, optimizing customer schedules, reducing labor costs, and controlling waste. With careful, thoughtful, collaborative preconstruction, we build value into every project right from the start.

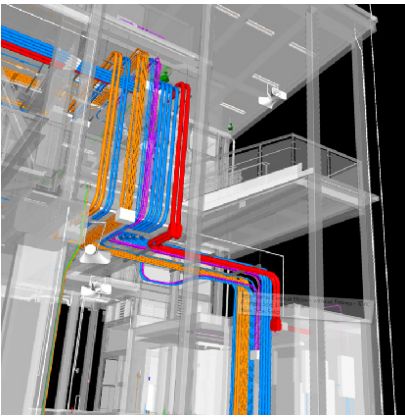
IN HOUSE BIM & VDC TEAM

CVE has a robust, in-house BIM/VDC team. We are dedicated to utilizing leading edge technology and practices to identify constructability issues before anyone picks up a shovel. Virtual Design and Construction (VDC) provides building information modeling (BIM) solutions that uses digital tools to create virtual models of buildings. These digital models are then evaluated prior to breaking ground, allowing project teams to optimize the way a building is constructed. This advanced technology provides opportunities fabricate off the virtual model and greatly improve the construction process throughout the project's lifespan.

CAPABILITIES

- 2D contract drawings translated into a 3D model
- Identify and synthesize prefabrication and off-site construction opportunities and follow them from conception to installation
- Provide quality-controlled markups to our VDC team and the same high-quality shop drawings to the field team.
- Communicate with and train field personnel on VDC process, setting appropriate expectations for anticipated deliverable
- On-site presence and support for the first-in-place install of any prefab item and constant communication with the field teams so that the process is clear and predictable
- Synthesize in-process feedback from the first-in-place install and continuously improve processes, products, and procedures based on field input





CONCEPT TO COMPLETION



COMPLETE PRECONSTRUCTION CAPABILITIES

The CVE preconstruction team is dedicated to providing lead edge solutions for our clients. We specialize in Lean Construction practices, off-site construction and prefabrication, BIM/VDC, multi-trade coordination, value engineering, and collaborative project delivery methods such as IPD & design build.

CAPABILITIES

- Underground assemblies for feeding electrical rooms and stub up locations
- Underground HDPE cards & duct banks
- Survey points derived from a coordinated model
- Electrical equipment layout coordination with clearances per code
- Hanger coordination and build sheets
- Custom supports to support/raise heavy equipment
- Complete overhead feeders start to end with accurate quantities
- Electrical panel assemblies and gutter knockouts for branch conduit
- Electrical panel supports and backing for electrical rooms
- Complete electrical room branch bends
- Branch conduit bends
- Pull boxes with knockouts for conduits
- Custom wall templates for in-wall box layouts, i.e. template also used for mounting furniture, TVs, monitors, etc.
- Engineered products, i.e. temp power, site lighting

PREFABRICATION & OFF-SITE CONSTRUCTION

CVE has a dedicated 73,028 sq ft preconstruction complex with much of that space dedicated to prefabrication. Our dedicated team of professionals take pride in their work, paying great attention to detail manufacturing assemblies or sub-assemblies off-site and delivering those assembled kits to the job sites 'just-in-time'. These efforts maximize the productivity of our skilled labor on-site, minimize material and labor costs, and help jobs keep up with compressed job schedules and trade stacking.

CAPABILITIES

- Underground assemblies (with or without installed conduit) built per job specs and shipped in order of install (pre-determined by field management & preconstruction team)
- Threaded GRC nipples ½"-6"
- Pre-bent large bore (2"- 6") and small-bore (1/2"-1-1/2") conduit, packaged and labeled for install
- Hangers built to job specs, racked and shipped on a cart in order of install
- Wall rough install boxes assembled, labeled, and packaged in order of install (predetermined by field management & preconstruction team)
- Trim kits packaged and shipped in order of install, following the same details as the wall rough pass
- Engraved tags/labels



CONTACT CVE PRECONSTRUCTION

JAMES MARTIN | DIRECTOR OF VDC & PRECONSTRUCTION | P: 801-908-6666 | E: businessdevelopment@cve.com